

FALL IN
LOVE
WITH...



HIGH LUMEN LED

ARCHITECTURAL DOWNLIGHT

1% DIMMABLE

New Construction, Remodel, Retrofit



MAXiLUME
ARCHITECTURAL LIGHTING

WWW.MAXILUME.COM

MAXILUME HH SERIES
1% DIMMABLE
HIGH LUMEN LED
ARCHITECTURAL DOWNLIGHT

The ideal choice for
*Architectural, Health Care, Hospitality,
Retail, Institutional, Entertainment,
Transportation & Public*
environments.

APERTURE

4",5"

6"

8",10"

LUMENS

Up to **2000L**

Up to **4000L**

Up to **8000L**

OPTICS

ND (Narrow)

MD (Medium)

WD (Wide)

LIFE TIME

50,000 Hrs
(L70)

CRI

90+

Elite Lighting's Eco-Friendly LED products offer the ultimate performance while maintaining the smallest carbon footprint supported by LM-79 and LM-80 tests completed by independent laboratories, and complies with California Title 24. Elite offers perfect delivery of dependable light with its Optilux, and CoolLED Advanced Technologies designed by the latest computer analysis software combined with the highest quality materials, making Elite the front runner in the lighting industry. All Elite products comply with UL, ETL, CSA, and Energy Star requirements. Elite brings the final piece of the puzzle to the lighting industry by being the greenest and the most efficient luminaire manufacturer.

The Optilux system comprises an Aluminum reflector with a Poly-Carbonate lens. Each reflector is made from 0.05" spun high grade Aluminum coated with a super-high reflective finish. Our Optilux design is engineered via computer simulation software and verified by our in-house photometry laboratory, guaranteeing optimal performance.

LED's are chosen from tightly framed MacAdam ellipses providing up to 8000 lumen of stringent color uniformity giving customers unparalleled control of color temperature and color rendering index consistency. High quality light is emitted through numerous available trims of various sizes and cosmetic designs which includes guaranteed life time warranty.

Elite's CoolLED Advanced thermodynamics heat sink design provides unsurpassed heat dissipation permitting years of bright, trouble-free operation while maintaining superb lumen output. This technology guarantees customer satisfaction by exceeding product life expectancy. Elite offers up to 5 years of limited warranty on its LED luminaires because of this advanced technology.

Elite uses the best available power supplies from major brands to ensure the most excellent quality and performance. LED drivers are specifically paired with the LED light source to ensure the highest efficiency and functionality. This enable maximum longevity and peace of mind to our customers.

Elite's hasslefree design enables easy maintenance of the luminaries from sturdy and safe mounting surfaces. The LED light source can be easily serviced from below the ceiling line, reducing labor and maintenance costs.

Elite upholds its status as Number One in customer satisfaction with the most efficient, highest performing products in the market. Elite has always maintained their customers as its number one priority by producing products that leave a minimal carbon footprint for a cleaner and more sustainable environment.

LISTING:

c-UL-us / c-ETL-us

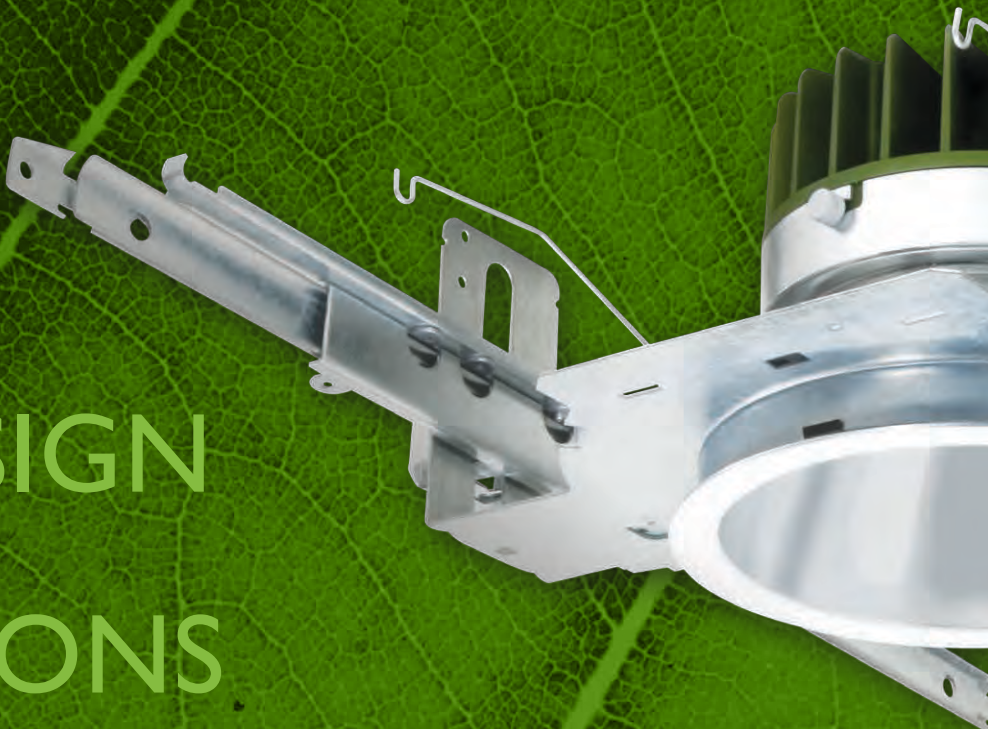
Listed for Damp Location

Listed for Feed Through Wiring

LM79 / LM80



SMART OPTIC DESIGN & VARIETY OF TRIM OPTIONS



DESIGN OPTIONS



▶ HH_-_501
▶ Reflector with Diffuse Lens



▶ HH_-_509
▶ Deco Glass Reflector with Diffuse Lens



▶ HH_-_521
▶ Standard Ring Glass Reflector with Diffuse Lens



▶ HH_-_528(WH)
▶ Reflector with Aluminum Disk & Diffuse Lens-White

* For 4", 5", 6", 8" & 10" optics, replace "_" in the optic's part number with 4, 5, 6, 8 & 10. Example: HH8-8501 for 8" optic.



▶ HH_-_507
▶ Wall Wash Reflector with Diffuse Lens



▶ HH_-_510
▶ Double Ring Glass Reflector with Diffuse Lens



▶ HH_-_523
▶ Prismo Deco Ring Glass with Diffuse Lens



▶ HH_-_528(AL)
▶ Reflector w/Aluminum Disk & Diffuse Lens- Aluminum



▶ HH_-_577
▶ Double Wall Wash Reflector with Diffuse Lens



▶ HH_-_511
▶ Triple Ring Glass Reflector with Diffuse Lens



▶ HH_-_522
▶ Euro Deco Ring Glass with Diffuse Lens



▶ HH_-_528(BZ)
▶ Reflector with Aluminum Disk & Diffuse Lens- Bronze



▶ HH_-_525
▶ Central Etched Float Glass with Diffuse Lens

COLOR OPTIONS

REFLECTOR - RING FINISH



▶ CL-WH Clear - White



▶ WT-WH Wheat-White



▶ W-WH White - White



▶ CL-SCH Chrome - Chrome



▶ SHZ-WH Satin Haze - White



▶ SHZ-SHZ Satin Haze - Satin Haze



▶ MB-WH Black - White

UNIQUE FEATURES & SPECIFICATIONS



1 COOLELED TECHNOLOGY™

Using *CoolLED Advanced Technology™*, our *Thermodynamic Die-Cast System™* evenly diffuses heat at a high steady rate to maintain the LED package at low temperatures. Our unique *CoolLED Technology™* is made of strong anticorrosive material with high thermal conductivity.

4 OPTILUX TECHNOLOGY™

Elite's optics and reflectors are precision polished and crafted with a variety of reflective and anti-reflective materials. *Polycarbonate* lenses efficiently control the light rays from the LED package depending on the particular application.

This technology enables precise transmission and refraction of the LED light source in order to meet the desired specifications. *Optilux* combines this unmatched performance along with visual comfort, glare reduction, and lamp image suppression.

2 LED CHIP

Elite uses the highest technology LED's available in CRI 85+ and 90+ with the right amount of lumen output and combined with our advanced *Optilux Technology™* gives out the perfect *Light Radiation™* pattern for various applications.

Elite Lighting's LED products are certified to *LM-79* and *LM-80* standards and are chosen from tightly framed *MacAdam* ellipses.

5 MOUNTING BRACKET

The mounting bracket is constructed from 16 gauge steel and is supplied with C-channel that are adjustable up to 28". Mounting brackets maybe adjusted up to 2-3/4" vertically from inside the housing.

Bar hangers are also Die-formed constructed for maximum heat dissipation and rust protection.

3 LED POWER SOURCE

The LED power supply is rated for 50/60 Hz at 120V to 277V input, produces less than 20% THD, has a power factor above 0.90, and is thermally protected for additional safety.

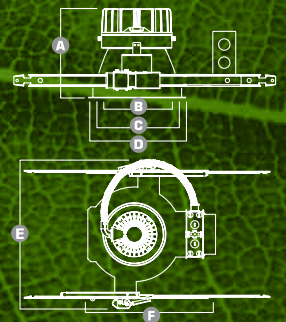
Elite's LED drivers come standard with 0-10V dimming. An optional *Lutron* driver for 1% dimming capability is also available that easily interfaces with *Lutron's Eco-System*.

ENERGY STAR, WARRANTY & LIFE TIME

» Elite Lighting's HH LED fixtures are **ENERGY STAR** certified for product safety and performance.

» *Elite offers a limited warranty of 5 years* on LED luminaires and a *Lifetime warranty* on trims & finishes.

» Elite's LED system features 70% lumen maintenance at 50,000 hours life.



10" HH10-LED

- A Height = 9-3/4"
- B Trim Aperture = 9-3/4"
- C Cut-out = 10-1/2"
- D Trim Outside Dia. = 10-3/4"
- E Width = 17-1/2"
- F Length = 20"-33"

8" HH8-LED

- A Height = 7-1/8"
- B Trim Aperture = 7-3/4"
- C Cut-out = 8-1/2"
- D Trim Outside Dia. = 9-1/8"
- E Width = 16"
- F Length = 20"-33"

6" HH6-LED

- A Height = 5-3/4"
- B Trim Aperture = 6"
- C Cut-out = 6-3/4"
- D Trim Outside Dia. = 7-3/8"
- E Width = 16"
- F Length = 20"-33"

5" HH5-LED

- A Height = 5-3/4"
- B Trim Aperture = 5"
- C Cut-out = 5-1/2"
- D Trim Outside Dia. = 6-3/8"
- E Width = 10-1/8"
- F Length = 18-1/8"

4" HH4-LED

- A Height = 5-3/4"
- B Trim Aperture = 4"
- C Cut-out = 4-1/2"
- D Trim Outside Dia. = 5-1/2"
- E Width = 16"
- F Length = 12-1/2"

HH SERIES LUMEN PACKAGES



NEW CONSTRUCTION (HH)



RETROFIT (HHJ)



REMODEL (HHR)

4 INCH	5 INCH	900 LUMENS 15W	1200 LUMENS 20W	6 INCH	900 LUMENS 15W	1200 LUMENS 20W	8 INCH	10 INCH	900 LUMENS 15W	1200 LUMENS 20W	2000 LUMENS 32W		
HH4-LED HHJ4-LED HHR4-LED	HH5-LED HHJ5-LED	2000 LUMENS 32W		HH6-LED HHJ6-LED HHR6-LED	2000 LUMENS 32W	3000 LUMENS 40W	4000 LUMENS 49W	HH8-LED HHJ8-LED HHR8-LED	HH10-LED HHJ10-LED	3000 LUMENS 40W	4000 LUMENS 49W	6000 LUMENS 80W	8000 LUMENS 100W

HOW to SPECIFY a HH SERIES MAXILUME LED DOWNLIGHT?

EXAMPLE: HH6-LED-4000L-LUTH-120-30K-90-HH6-6501-CL-WH

HH4-LED (NEW CONSTRUCTION), HHR4-LED (REMODEL), HHJ4-LED (RETROFIT)

▶ TYPE	▶ LUMENS	▶ DIMMING	▶ OPTICS	▶ COLOR	▶ CRI	▶ EMERGENCY	▶ TRIM TYPE	▶ REFLECTOR/ RING FINISH	▶ DISC
HH4-LED	900L (15W)	LUTH-120	ND (NARROW)	27K	85+	EMG-LED	HH4-4501 HH4-4521	CL-WH W-WH	BLUE
HHJ4-LED	1200L (20W)	LUTH-277	MD (MEDIUM)	30K	90+		HH4-4528 HH4-4522	CL-SCH MB-WH	RED
HHR4-LED	2000L (32W)	DIM10-120 DIM10-277	WD (WIDE)	35K 40K 50K (85+ CRI ONLY)			HH4-4507 HH4-4523 HH4-4577 HH4-4525 HH4-4510 HH4-4509 HH4-4511	SHZ-SHZ WT-WH SHZ-WH	GREEN FROST AL BZ WH

HH5-LED (NEW CONSTRUCTION), HHJ5-LED (RETROFIT)

▶ TYPE	▶ LUMENS	▶ DIMMING	▶ OPTICS	▶ COLOR	▶ CRI	▶ EMERGENCY	▶ TRIM TYPE	▶ REFLECTOR/ RING FINISH	▶ DISC
HH5-LED	900L (15W)	LUTH-120	ND (NARROW)	27K	85+	EMG-LED	HH5-5501 HH5-5525	CL-WH W-WH	BLUE
HHJ5-LED	1200L (20W)	LUTH-277	MD (MEDIUM)	30K	90+		HH5-5528 HH5-5509	CL-SCH MB-WH	RED
	2000L (32W)	DIM10-120 DIM10-277	WD (WIDE)	35K 40K 50K (85+ CRI ONLY)			HH5-5507 HH5-5510 HH5-5577 HH5-5511	SHZ-SHZ WT-WH SHZ-WH	GREEN FROST AL BZ WH

HH6-LED (NEW CONSTRUCTION), HHR6-LED (REMODEL), HHJ6-LED (RETROFIT)

▶ TYPE	▶ LUMENS	▶ DIMMING	▶ OPTICS	▶ COLOR	▶ CRI	▶ EMERGENCY	▶ TRIM TYPE	▶ REFLECTOR/ RING FINISH	▶ DISC
HH6-LED	900L (15W)	LUTH-120	ND (NARROW)	27K	85+	EMG-LED	HH6-6501 HH6-6521	CL-WH W-WH	BLUE
HHJ6-LED	1200L (20W)	LUTH-277	MD (MEDIUM)	30K	90+		HH6-6528 HH6-6522	CL-SCH MB-WH	RED
HHR6-LED	2000L (32W)	DIM10-120 DIM10-277	WD (WIDE)	35K 40K 50K (85+ CRI ONLY)			HH6-6507 HH6-6523 HH6-6577 HH6-6525 HH6-6510 HH6-6509 HH6-6511	SHZ-SHZ WT-WH SHZ-WH	GREEN FROST AL BZ WH

HH8-LED (NEW CONSTRUCTION), HHR8-LED (REMODEL), HHJ8-LED (RETROFIT)

▶ TYPE	▶ LUMENS	▶ DIMMING	▶ OPTICS	▶ COLOR	▶ CRI	▶ EMERGENCY	▶ TRIM TYPE	▶ REFLECTOR/ RING FINISH	▶ DISC
HH8-LED	900L (15W)	LUTH-120	ND (NARROW)	27K	85+	EMG-LED	HH8-8501 HH8-8521	CL-WH W-WH	BLUE
HHJ8-LED	1200L (20W)	LUTH-277	MD (MEDIUM)	30K	90+		HH8-8528 HH8-8522	CL-SCH MB-WH	RED
HHR8-LED	2000L (32W)	DIM10-120 DIM10-277	WD (WIDE)	35K 40K 50K (85+ CRI ONLY)			HH8-8507 HH8-8523 HH8-8577 HH8-8525 HH8-8510 HH8-8509 HH8-8511	SHZ-SHZ WT-WH SHZ-WH	GREEN FROST AL BZ WH

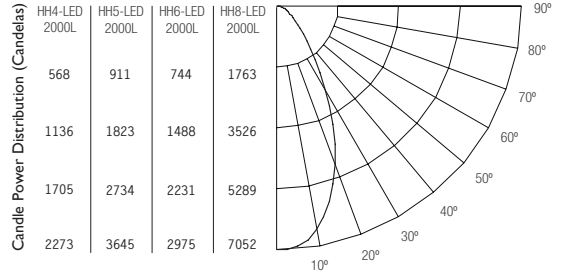
HH10-LED (NEW CONSTRUCTION), HHJ10-LED (RETROFIT)

▶ TYPE	▶ LUMENS	▶ DIMMING	▶ OPTICS	▶ COLOR	▶ CRI	▶ EMERGENCY	▶ TRIM TYPE	▶ REFLECTOR/ RING FINISH	▶ DISC
HH10-LED	900L (15W)	LUTH-120	ND (NARROW)	27K	85+	EMG-LED	HH10-1501 HH10-1521	CL-WH W-WH	BLUE
HHJ10-LED	1200L (20W)	LUTH-277	MD (MEDIUM)	30K	90+		HH10-1528 HH10-1522	CL-SCH MB-WH	RED
	2000L (32W)	DIM10-120 DIM10-277	WD (WIDE)	35K 40K 50K (85+ CRI ONLY)			HH10-1507 HH10-1523 HH10-1577 HH10-1525 HH10-1510 HH10-1509 HH10-1511	SHZ-SHZ WT-WH SHZ-WH	GREEN FROST AL BZ WH

* Actual lumen output may vary based on the reflector color. Contact factory for IES file.

For specification sheets browse: http://www.iuseeliteled.com/product_lines/led_architectural/3

HH SERIES DOWNLIGHT PHOTOMETRY



HH4-LED-2000L-DIM10-I20-MD-40K-HH4-450I-CL-SCH

TEST NO.: EL-111368

INPUT WATTS: 34.9 LUMENS: 1944 CRI: +85 EFFICACY: 56 CCT: 4000K SPACING CRITERIA: 0.86

Luminance (Average candela/M ²)				Lumens Per Zone		Candela Tabulation		Coefficients of Utilization - Zonal Cavity Method																			
Angle in Degrees	Average 0°	Average 45°	Average 90°	Zone	Lumens	Candela at 0°		Effective Floor Cavity Reflectance 0.20																			
						0	5	RC	80%			70%			50%			30%			10%			0%			
								RW	70%	50%	30%	10%	70%	50%	30%	10%	50%	30%	10%	50%	30%	10%	50%	30%	10%	0%	
45	58521	41428	32239	0-10	204.75	0	2117	0	119	119	119	119	119	116	116	116	116	111	111	111	107	107	107	102	102	102	100
55	16063	12030	4546	10-20	555.08	5	2180	1	114	111	108	106	104	111	109	106	104	105	103	101	101	99	98	97	96	95	93
65	8086	1886	1300	20-30	592.79	15	2081	2	108	103	93	86	80	106	101	97	94	98	95	92	90	92	90	88	87	87	87
75	1909	1394	598	30-40	369.13	25	1462	3	102	96	91	87	82	100	94	90	86	92	88	85	89	86	83	87	84	82	80
85	5121	4054	274	40-50	169.98	35	794	4	97	89	84	79	75	95	88	83	79	86	82	78	84	80	77	82	79	76	75
				50-60	38.35	45	329	5	92	84	78	73	70	90	83	77	73	81	76	72	79	75	72	78	74	71	69
				60-70	9.87	55	73	6	87	78	72	68	66	86	77	72	68	76	71	67	75	70	67	73	69	66	65
				70-80	2.38	65	27	7	83	74	67	63	62	82	73	67	63	72	66	63	70	66	62	69	65	62	61
				80-90	1.75	75	3	8	79	69	63	59	58	78	69	63	59	68	62	59	67	62	58	66	61	58	57
						85	3	9	75	65	59	55	54	74	65	59	55	64	59	55	63	58	55	62	58	55	53
						90	3	10	72	62	56	52	52	71	61	56	52	61	55	52	60	55	52	59	55	52	50

HH5-LED-2000L-DIM10-I20-MD-40K-HH5-550I-CL-SCH

TEST NO.: EL-111376

INPUT WATTS: 35.8 LUMENS: 1915 CRI: +85 EFFICACY: 53 CCT: 4000K SPACING CRITERIA: 0.66

Luminance (Average candela/M ²)				Lumens Per Zone		Candela Tabulation		Coefficients of Utilization - Zonal Cavity Method																			
Angle in Degrees	Average 0°	Average 45°	Average 90°	Zone	Lumens	Candela at 0°		Effective Floor Cavity Reflectance 0.20																			
						0	5	RC	80%			70%			50%			30%			10%			0%			
								RW	70%	50%	30%	10%	70%	50%	30%	10%	50%	30%	10%	50%	30%	10%	50%	30%	10%	0%	
45	26962	14739	12762	0-10	288.46	0	3645	0	119	119	119	119	119	117	117	117	117	111	111	111	107	107	107	102	102	102	100
55	5497	3978	2197	10-20	548.19	5	3111	1	114	111	109	107	105	112	109	107	105	105	103	102	101	100	99	98	97	96	94
65	2914	711	532	20-30	535.55	15	1891	2	109	104	100	96	92	106	102	98	95	99	96	93	96	93	91	93	91	89	88
75	1089	752	302	30-40	357.89	25	1092	3	103	97	92	88	84	101	96	91	87	93	89	86	90	87	85	88	86	83	82
85	3467	2841	215	40-50	143.46	35	601	4	98	91	85	81	78	96	90	85	81	88	83	80	86	82	79	84	81	78	76
				50-60	29.67	45	234	5	93	85	80	75	72	92	84	79	75	83	78	74	81	77	74	79	76	73	72
				60-70	7.46	55	38	6	89	80	74	70	68	88	80	74	70	78	73	70	77	72	69	75	72	69	67
				70-80	2.04	65	15	7	85	76	70	66	65	83	75	70	66	74	69	65	73	68	65	72	68	65	63
				80-90	1.79	75	3	8	81	72	66	62	62	80	71	66	62	70	65	61	69	65	61	68	64	61	60
						85	3	9	77	68	62	58	57	76	67	62	58	67	62	58	66	61	58	65	61	58	56
						90	3	10	74	65	59	55	55	73	64	59	55	63	58	55	63	58	55	62	58	55	53

HH6-LED-3000L-DIM10-I20-MD-40K-HH6-650I-CL-SCH

TEST NO.: EL-121353

INPUT WATTS: 46 LUMENS: 3123 CRI: +85 EFFICACY: 68 CCT: 4000K SPACING CRITERIA: 0.94

Luminance (Average candela/M ²)				Lumens Per Zone		Candela Tabulation		Coefficients of Utilization - Zonal Cavity Method																			
Angle in Degrees	Average 0°	Average 45°	Average 90°	Zone	Lumens	Candela at 0°		Effective Floor Cavity Reflectance 0.20																			
						0	5	RC	80%			70%			50%			30%			10%			0%			
								RW	70%	50%	30%	10%	70%	50%	30%	10%	50%	30%	10%	50%	30%	10%	50%	30%	10%	0%	
45	50485	53828	36804	0-10	276.58	0	2953	0	119	119	119	119	119	116	116	116	116	111	111	111	107	107	107	102	102	102	100
55	21079	19694	8750	10-20	735.17	5	2974	1	113	110	107	105	103	111	108	106	103	104	102	100	100	99	97	97	95	94	93
65	10515	5478	2444	20-30	872.71	15	2773	2	107	102	97	93	90	105	100	96	92	97	93	90	94	91	88	91	89	87	85
75	1991	1989	1238	30-40	710.75	25	2166	3	101	94	88	84	80	99	92	87	83	90	85	82	87	84	81	85	82	79	78
85	3488	2985	917	40-50	377.16	35	1374	4	95	87	81	76	73	93	86	80	76	83	79	75	81	77	74	79	76	73	71
				50-60	107.74	45	651	5	90	81	74	70	68	88	80	74	69	78	73	69	76	71	68	74	70	67	66
				60-70	32.83	55	81	6	85	75	68	64	63	83	74	68	64	73	67	63	71	66	63	70	66	62	61
				70-80	7.28	65	9	7	80	70	63	59	59	79	69	63	59	68	62	58	67	62	58	66	61	58	56
				80-90	3.24	75	3	8	76	65	59	55	54	74	65	59	54	64	58	54	63	58	54	62	57	54	52
						85	5	9	72	61	55	51	51	71	61	55	51	60	54	50	59	54	50	58	53	50	49
						90	3	10	68	58	52	47	47	67	57	51	47	56	51	47	56	51	47	55	50	47	45

HH8-LED-3000L-DIM10-I20-MD-40K-HH8-850I-CL-SCH

TEST NO.: EL-121345

INPUT WATTS: 46.9 LUMENS: 3239 CRI: +85 EFFICACY: 69 CCT: 4000K SPACING CRITERIA: 0.68

Luminance (Average candela/M ²)				Lumens Per Zone		Candela Tabulation		Coefficients of Utilization - Zonal Cavity Method																			
Angle in Degrees	Average 0°	Average 45°	Average 90°	Zone	Lumens	Candela at 0°		Effective Floor Cavity Reflectance 0.20																			
						0	5	RC	80%			70%			50%			30%			10%			0%			
								RW	70%	50%	30%	10%	70%	50%	30%	10%	50%	30%	10%	50%	30%	10%	50%	30%	10%	0%	
45	26140	25381	6656	0-10	520.91	0	6551	0	119	119	119	119	119	117	117	117	117	111	111	111	107	107	107	102	102	102	100
55	7066	5630	953	10-20	937.86	5	7045	1	114	111	109	107	105	112	109	107	105	105	103	102	101	100	99	98	97	96	94
65	3485	637	229	20-30	848.90	15	4839	2	109	104	100	97	94	106	102	99	96	99	96	93	96	94	91	93	91	90	88
75	676	384	141	30-40	616.77	25	2570	3	103	97	92	88	84	101	96	91	88	93	89	86	91	88	85	88	86		



OUR BRANDS

At Elite Lighting, we continually develop our brands to better meet the demands of an ever-changing lighting world. The Elite brand family encompasses the following lighting brands:



Main Office: Los Angeles, CA

- WWW.IUSEELITE.COM
- Tel: 1-323-888-1973 / 1-877-375-5555
- Fax: 1-323-888-1977 / 1-877-375-3333

© Copyright 2014, Elite Lighting. All Rights Reserved.

The products shown in this catalog are covered by US and international patents. Specifications are subject to change without prior notice. Elite Lighting reserves the right to make any changes in the design, construction and listing approval of the products listed in this catalog which may be required by law or by the rules of any regulatory body or at its discretion. Dimensions and specifications are subject to change without prior notice. Not responsible for any typographical error. Wattage and specifications may be different for products supplied in CANADA. Rev 3.0-2014